

SECOND NATURE[®] KITCHENS



IF YOU CAN DREAM IT, WE CAN DESIGN IT

CONTENTS



THE CLASSIC COLLECTION

Clarendon	7
Mornington Beaded	15
Mornington Shaker	23
Hunton	31
Fitzroy	39
Milbourne	49
Belsay	57
Broadoak	65
Stanhope Classic	69

THE HANDLELESS COLLECTION

Remo	75
Lichfield	85
Stanhope Modern	89
Ellerton	91
Hunton	95
Porter	99
Alpina	111
Unity	113

THE MODERN COLLECTION

Porter	117
Alpina	123
Unity	125
Featured Glazed	133

FINISHING TOUCHES

Door Collection	135	Storage	143	Appliances	157
Made-to-Measure Options	137	Worksurfaces	149	Real Kitchens	159
Colour Collection	139	Handles	151	Find Your Local Specialist	160
Planning Your Kitchen	141	Handleless Trims	153		
		Lighting	155		



PRICE INDICATOR



FURTHER PAINTED COLOURS AVAILABLE



BESPOKE SIZES AVAILABLE



A MADE-TO-MEASURE RANGE



REAL WOOD VENEER



SOLID WOOD/ REAL WOOD VENEER

SN.

SECOND NATURE[®] KITCHENS

Designing a kitchen is Second Nature to us,
so your dream room is never far away.

Here at Second Nature we have an abundance of design possibilities ready and waiting to help you create your perfect kitchen.

From contemporary to classic, our expert designers have created an extensive collection of kitchens to suit an array of budgets, spaces and styles, and with generations of experience, we're confident we'll help you discover the heart of your home.

Available through a network of independent retailers across the UK, your local Second Nature specialist will guide you through the entire process with the highest level of service and care, to ensure you get a kitchen that fits flawlessly around your lifestyle.

Packed full of the very latest kitchen ideas, this inspiration book aims to provide you with the confidence to create the perfect setting that will last for years to come.

www.sncollection.co.uk





HOME & COLONIAL STORES

ALSO PATH NORTH ROAD

W. & Co. Ltd.

WOMEN'S BOOTS

TAYLOR'S GENTS

TAYLOR'S GENTS



WHERE IT ALL BEGAN

•••

Our story began over 100 years ago, as a family run, independent business in County Durham.

Since then, we have evolved and grown, whilst keeping our roots firmly in the region, establishing Second Nature as one of the leading independent kitchen brands across the UK.

From day one our approach was to create a kitchen collection that was innovative, flexible and good quality - all at an affordable price; values we still hold today.

With an expert in-house design team, we scour the world to bring you the latest styles, materials and finishes. Combining these with new technologies and functions, we have meticulously crafted an extensive collection of kitchen furniture, that perfectly suits any home.

Our unique approach has successfully created kitchens for thousands of homes, won multiple awards and forged lasting partnerships with a growing family of over 300 retailers nationwide.

Family company. National brand. Local experts.

KITCHENS FROM LOCAL INDEPENDENT SPECIALISTS



At Second Nature, we're proud to bring your kitchen dreams to life, through a specialist network of over 300 independent studios across the UK.

IF YOU CAN DREAM IT, WE CAN DESIGN IT.

The benefit of choosing a trusted, independent Second Nature specialist, lies in the personal, tailored service you'll receive. Listening to your ideas, tastes and lifestyle needs, with the knowledge to re-imagine the best use of your space, your Second Nature designer will create a tailor-made kitchen just for you - which you simply won't find anywhere else.

INDEPENDENT KITCHEN DESIGN IS PRICELESS, BUT DOESN'T COST AS MUCH AS YOU THINK...

Providing trusted advice and considering every last detail, your Second Nature designer will guide you through the entire process from planning and design, right through to installation - with honesty, transparency, and the ability to handle many other practical elements of your project.

Find your local, independent Second Nature specialist, and discover your dream kitchen.

www.sncollection.co.uk/showrooms



SECOND NATURE[®]

KITCHENS



A kitchen scene featuring a marble countertop. In the foreground, a wooden cutting board holds a loaf of bread with a golden-brown crust and visible seeds. To the left, a white ceramic container is partially visible. The background shows a white wall with a subtle pattern. A semi-transparent white box with a thin black border is centered over the image, containing text.

SN.

THE CLASSIC COLLECTION

Our classic collection fuses a deep understanding of today's lifestyles with British design heritage – created to work in any home. A classic collection for the modern era with timeless design appeal, you'll continue to enjoy these kitchens year after year.





CLARENDON

—
SHOWN IN DUST GREY





CLARENDON

Influenced by period furniture, Clarendon cleverly fuses a simple Shaker look with a traditional framed design, for a unique and sophisticated appearance.

Available in a choice of two colours as standard and further painted options, this beautiful range features a distinctly noticeable woodgrain finish, paired with delicate Ovolo beading, to create a kitchen design bursting with character.

SHOWN IN DUST GREY

SECOND NATURE THE CLASSIC COLLECTION



BESPOKE
SIZES



SOLID WOOD/
REAL WOOD
VENEER



2 COLOURS AS STANDARD



PORCELAIN
MATT



DUST GREY
MATT

+



FURTHER PAINTED
COLOURS AVAILABLE
SEE PAGE 139/140

Worksurfaces: Dekton Ultra Compact Bergen Stonika Polished

Handles: Fenwick Chrome Cup Handle (H1122.160.CH, H1122.320.CH) & Knob (K265.33.CH)

CLARENDON

SHOWN IN HARTFORTH BLUE

Right: The deep and dramatic hues of Hartforth Blue combine perfectly with Herringbone flooring, to create a rich and warm aesthetic. The addition of an eye-catching glazed dresser unit provides a stunning storage area, whilst adding a point of difference to this beautiful space.

Below: A modern take on the traditional Belfast sink gives this kitchen a contemporary edge.

Worksurfaces: Silestone Quartz Eternal Sernena Suede & Strata Timber Select

Handles: Hoxton Antique Bronze Effect Cup Handle (HI104.96.BR)
& Weel Antique Bronze Effect Knob (HI091.60.BR)







CLARENDON

SHOWN IN HARTFORTH BLUE

Left: Make clutter a thing of the past with a built-in appliance bank - helping to maximise your space and offering an abundance of storage.

Below: The decorative detailing of Clarendon lends itself perfectly to the introduction of rustic accessories, such as our bronze cup and knob handles.

Worksurfaces: Silestone Quartz Eternal Sernena Suede

Handles: Hoxton Antique Bronze Effect Cup Handle (HI104.96.BR)
& Weel Antique Bronze Effect Knob (HI091.60.BR)







MORNINGTON
BEADED

—
SHOWN IN PORCELAIN



MORNINGTON BEADED

Featuring the finer trimmings of a traditional kitchen and an exquisite ash-grain finish, Mornington Beaded cleverly explores the ornate detailing of a classic Shaker style, through the addition of an elegant bead.

SHOWN IN PORCELAIN



BESPOKE
SIZES



SOLID WOOD/
REAL WOOD
VENEER



7 COLOURS AS STANDARD



+



FURTHER PAINTED COLOURS AVAILABLE
SEE PAGE 133/140

Worksurfaces: Strata Quartz Marbled White

Handles: Mayfair Pewter D Handle (H267.96.PE) & Stivichall Pewter Knob (K265.33.PE)

MORNINGTON BEADED

SHOWN IN CASHMERE

Right: Open shelving provides decorative storage space for your everyday essentials and cherished possessions.

Below: A Kesseböhmer Tandem Larder brings the contents of your cupboards out towards you.

Worksurfaces: Strata Quartz Luna Pearl

Handles: Wellington Bright Nickel Cup Handle (H1079.32.BN)
& Bright Nickel Knob (K1075.32.BN)









MORNINGTON BEADED

SHOWN IN PIMENTO, STONE & PORCELAIN

Left: A calming palette of natural hues provides a perfect canvas to experiment with pops of colour, making a striking statement in any classic or modern setting.

Below: Turn the heart of your home into a welcoming social space, with the introduction of a feature island, complete with a decorative wine rack.

Worksurfaces: Strata Quartz Pietra Auburn
& Strata Quartz Pietra Taupe

Handles: Harton Cup Handle (H1146.105.AGB), Harton Bow Handle (H1147.205.AGB) & Harton Knob Handle (K1118.31.AGB)





SECOND NATURE THE CLASSIC COLLECTION

Worksurface: Strata Quartz Strata Statuario
Handle: Heworth Bright Nickel Knob (K1119.30.BN)



MORNINGTON SHAKER

—
SHOWN IN IVES BLUE & INKWELL



MORNINGTON SHAKER

A timeless classic, ready and waiting to be made your own. With a distinctive ash-grain, our Mornington Shaker collection is a charming staple for any home.

SHOWN IN DUST GREY



BESPOKE
SIZES



SOLID WOOD/
REAL WOOD
VENEER



7 COLOURS AS STANDARD



+



FURTHER PAINTED COLOURS AVAILABLE
SEE PAGE 133/143

Worksurfaces: Strata Quartz Snowfall

Handles: Dartmouth Chrome T-bar Handle (H1123.60.CH) & D Handle (H1128.160.CH)

MORNINGTON SHAKER

SHOWN IN HARTFORTH BLUE

Right: The simple yet elegant design of our Mornington Shaker, allows you to experiment with statement decor, such as eye-catching handles and decorative wall tiling - offering a contemporary feel in a traditional space.

Below: The subtle woodgrain beneath the rich hues of Hartforth Blue, adds a beautiful textured finish, creating a naturally authentic look.

Worksurfaces: Strata Quartz Marbled Grey

Handles: Claremont Antique Bronze Bar Handle (H1103.160.BR) & Knob (K1106.30.BR)









MORNINGTON SHAKER

SHOWN IN SLATE & PARTRIDGE GREY

Left: A landscape inspired colour palette can help create a rustic feel.

Below: With a simple frame, and distinctive handles, this look blends both the modern and traditional aesthetics perfectly.

Worksurfaces: Strata Quartz Hailstorm & Strata Timber Distressed

Handles: Weel Black Satin T-Bar Handle (H1091.60.BS) & Barton Black Satin Cup Handle (H1092.64.BS)





HUNTON

SHOWN IN DOVE GREY



Worksurface: Sensa Granite Nilo

Handle: Claremont Black Industrial Matt D Handle (H1103160 MB)



HUNTON

An unassuming one-piece design, available in a choice of four trend-leading colours and further bespoke options, Hunton is a contemporary take on the classic Shaker.

With a narrow surround and a smooth painted finish, this sophisticated range is equally at home in any modern or traditional setting.

SHOWN IN PORCELAIN & HARTFORTH BLUE



BESPOKE
SIZES



4 COLOURS AS STANDARD



+



FURTHER PAINTED
COLOURS AVAILABLE
SEE PAGE 138/140

Worksurfaces: Strata Quartz Absolute Marbled White

Handles: Knurled Aged Brass Bar Handles (H1126257B386AGB) & Knob Handles (K111120B384AGB)

HUNTON

SHOWN IN PORCELAIN & HARTFORTH BLUE

Right: Acting as a striking centerpiece, this Hunton island has been designed to emulate the look of free-standing furniture; a nod to heritage design whilst remaining sleek and practical. This kitchen is perfect for entertaining friends, dining with family or simply enjoying a cup of tea on a Sunday morning.

Worksurfaces: Strata Quartz Absolute Marbled White

Handles: Knurled Antique Bronze Bar Handles (H1126.257B386BR) & Knob Handles (K1111.20B384BR)









HUNTON

SHOWN IN PUTTY

Left: Open shelving and full height larder units ensure storage doesn't have to be sacrificed within a smaller space.

Below: The addition of ultra-stylish, minimalist trim handles, transform Hunton's classical aesthetic into a sleek and seamless design.

Worksurfaces: Dekton Kira Matt

Handles: Soho Matt Black Trim Handles (H1131.90.MB, H1131.250.MB)





FITZROY

SHOWN IN PARTRIDGE GREY





FITZROY

A simple Shaker with a smooth painted finish, Fitzroy provides an ideal canvas to create a striking, quintessentially British look, or stay pared back to maintain a refined understated style.

SHOWN IN PARTRIDGE GREY & PORCELAIN



BESPOKE
SIZES



7 COLOURS AS STANDARD

- 

PORCELAIN
MATT
- 

STONE
MATT
- 

DOVE GREY
MATT
- 

PARTRIDGE
GREY
MATT
- 

DUST GREY
MATT
- 

GRAPHITE
MATT
- 

HARTFORTH
BLUE
MATT

+



**FURTHER PAINTED
COLOURS AVAILABLE**
SEE PAGE 133/140

Worksurfaces: Strata Quartz Calacatta Gold

Handles: Barton Chrome Cup Handle (H1092.64.CH) & Chrome Knob (K265.33.CH)

FITZROY

SHOWN IN COPSE GREEN

Right: Achieve a sophisticated, heritage feel to your design through the clever use of classic antique bronze cup handles and a dramatic Strata Quartz Calacatta Gold splashback.

Below: Our best-selling LeMans corner unit aims to banish dark corners, bringing all your kitchen essentials within reach.

Worksurface: Strata Quartz Calacatta Gold

Handles: Claremont Antique Bronze Cup Handle (H1105.64.BR)
& Antique Bronze Knob (K1106.30.BR)







FITZROY

SHOWN IN GRAPHITE & DOVE GREY

Left: The simplicity of Fitzroy's design, paired with a neutral colour palette, allows you to experiment with bright, bold accents, to bring personality to your dream design.

Below: Open shelving and ornate tiling gives this look a classic yet fashionable aesthetic.

Worksurfaces: Strata Quartz Grey Venato

Handles: Claremont Antique Bronze Effect D Handle (H1103.160.BR)



FITZROY

SHOWN IN HARTFORTH BLUE, SLATE & PARTRIDGE GREY

Right: Mix multiple colours and materials together to create a modern twist on this classic, simple Shaker.

Below: Create bespoke units to house appliances whilst adding additional storage space.

Worksurfaces: Silestone Quartz Yukon & Strata Timber Prime Oak

Handles: Arlington Bright Nickel Bar Handle (H503.128.BN)







MILBOURNE

SHOWN IN DUST GREY & DOVE GREY

Worksurface: Strata Calacatta Silver

Handle: Harton Bright Nickel Knob (K1118.31.BN) & Cup Handle (H1146.105.BN)

WWW.SNCCOLLECTION.CO.UK 49 | 50



MILBOURNE



From one look comes an abundance of possibilities. With a wide frame design and subtly textured woodgrain finish, Milbourne's Shaker style can be dressed up or down, to suit any setting. A true timeless classic.

SHOWN IN PORCELAIN



11 COLOURS AS STANDARD



CHALK
MATT



PORCELAIN
MATT



ALABASTER
CLASSIC
MATT



ALMOND
MATT



SAGE
MATT



STONE
MATT



DOVE GREY
MATT



PARTRIDGE
GREY
MATT



DUST GREY
MATT



CHARCOAL
MATT



HARTFORTH
BLUE
MATT

+



FURTHER PAINTED
COLOURS AVAILABLE
SEE PAGE 139/140

Worksurface: Strata Quartz Marbled White & Strata Timber Salvaged

Handles: Brafferton Knob (K562.32.BMS)

MILBOURNE

SHOWN IN HARTFORTH BLUE

Right: The rich hues of Hartforth Blue work beautifully in this larger space. An intricate island, decorative dresser and accompanying dining table transform this kitchen into a stylish living area, perfect for entertaining or simply enjoying a cup of tea on a morning.

Below: A free-standing bespoke dresser offers a perfect place to house your everyday essentials whilst providing an elegant furniture piece that will truly stand the test of time.

Worksurface: Strata Quartz White Venato

Handles: Linton T-Bar Handle (H1120.60.CH) & Bar Handle (H1120.160.CH)







MILBOURNE

SHOWN IN CHARCOAL

Left: Pair deep, dark tones such as Charcoal with light timber worksurfaces for a modern take on this classic design.

Below: Spend quality time with friends and family around a striking yet practical kitchen island.

Worksurface: Strata Quartz Mirror & Strata Timber Rubberwood

Handle: Filey Chrome Cup Handle (H716.128.CH)





SECOND NATURE THE CLASSIC COLLECTION

Worksurface: Silestone Eternal Noir
Handles: Hoxton Black Industrial Matt Cup Handle (H1104.96.MB)
& Claremont Black Industrial Matt Knob (K1106.30.MB)



BELSAY

—
SHOWN IN INDIGO



BELSAY

Available in four neutral hues, two on-trend deep tones and our full painted palette, this simple, affordable Shaker features a slightly narrower frame and woodgrain style finish, creating a contemporary twist on this classic style.

SHOWN IN DOVE GREY & GRAPHITE

SECOND NATURE THE CLASSIC COLLECTION





6 COLOURS AS STANDARD



PORCELAIN
MATT



CASHMERE
MATT



DOVE GREY
MATT



DUST GREY
MATT



INDIGO
MATT



GRAPHITE
MATT

+



FURTHER PAINTED
COLOURS AVAILABLE
SEE PAGE 139/140

Worksurface: Strata Quartz Carrara Classic

Handles: Claremont Industrial Matt Black Knob (K1106.30.MB)

BELSAY

SHOWN IN PORCELAIN

Right: The simplicity of Porcelain, provides a blank canvas in which to experiment with contrasting features such as a striking granite worktop and splashback.

Below: A Kesseböhmer Tandem Solo pull-out larder stores everything you need within easy reach.

Worksurface: Sensa Granite Ice Blue

Handles: Kirkby Stainless Steel Effect Bow Handle (H523.160.SS)







BELSAY

SHOWN IN OLIVE

Olive green introduces earthy simplicity to this Belsay design, creating a beautiful, subtle statement that will work well in any setting.

Worksurface: Strata Quartz Mirror Pietra Icy White
Handle: Harton Aged Brass Bow Handle (H1147.205.AGB)
Harton Aged Brass Knob Handle (K1118.31.AGB)





BROADOAK

SHOWN IN PUTTY & REGIMENT



Worksurface: Strata Granite Steel Grey & Strata Timber Iroko

Handles: Leeming Bright Nickel Bar (H1002.160.BN) & Bright Nickel T-Bar Handle (H1003.62.BN)



BROADOAK

Broadoak epitomises the simple values and clean design lines of the Shaker movement. Its unfussy style and natural appearance ensures this enduring look never goes out of fashion.

SHOWN IN NATURAL & ALABASTER



SOLID WOOD/
REAL WOOD
VENEER



4 COLOURS AS STANDARD



ALABASTER
CLASSIC
MATT



STONE
MATT



PARTRIDGE
GREY
MATT



NATURAL
MATT

+



FURTHER PAINTED
COLOURS AVAILABLE
SEE PAGE 139/140

Worksurface: Strata Quartz Quartz Mirror

Handle: Solid Pewter D Handle (H580.160.PE)



STANHOPE CLASSIC

LANGLEY SHOWN IN MATT BLUE CANVAS & MATT DOVE GREY

Worksurface: Strata Granite Graphite Pearl

Handles: Reeth Chrome Knob (K1113.46.CH)

WWW.SNCOLLECTION.CO.UK 69170



STANHOPE CLASSIC

With a varied selection, Stanhope boasts a complete made-to-measure collection across three classic door styles, in a choice of matt, gloss, feature concrete and woodgrain effect finishes. Choose from a simple ever-popular Shaker, through to an eye-catching, traditional cathedral arch design.

MELDON SHOWN IN MATT PORCELAIN

SECOND NATURE THE CLASSIC COLLECTION



MADE TO MEASURE

Worksurface:
Strata Timber Oak

Handle:
Claremont Matt Black Knob (K1106.30.MB) &
Vale Cup Matt Black Handle (H1110.64.MB)



TO VIEW THE FULL STANHOPE CLASSIC COLLECTION PLEASE SEE PAGE 137

MATT

- 
PORCELAIN
MATT
- 
DOVE GREY
MATT
- 
CASHMERE
MATT
- 
DUST GREY
MATT
- 
BLUE CANVAS
MATT
- 
INDIGO BLUE
MATT
- 
THORPE
GREEN
MATT
- 
GRAPHITE
MATT
- 
MATT BLACK
MATT

FEATURE

- 
CONCRETE

GLOSS

- 
PORCELAIN
MATT
- 
CREAM
MATT
- 
DOVE GREY
MATT
- 
CASHMERE
MATT
- 
DUST GREY
MATT

WOODGRAIN FINISH

- 
SUPER WHITE
- 
CREAM
- 
GREY
- 
MUSSEL
- 
CASHMERE





SN.

THE HANDLELESS COLLECTION

Practicality and style come together to create our seamlessly beautiful, handleless kitchen collection. Whether you opt for a 'true' handleless design with a trim, such as Porter, or an integrated j-pull, like our popular Remo range, our handleless kitchens are equally at home in any modern or traditional setting.



SECOND NATURE THE HANDLELESS COLLECTION

REMO

SHOWN IN MATT PORCELAIN & GLOSS GRAPHITE





REMO

Inspired by modern European styles, Remo's contemporary yet minimalist design features a painted finish and an integrated j-pull handle, making it one of our most popular modern ranges. The added availability of bespoke elements makes Remo perfect for those searching for a clean, sleek and uncluttered look.

SHOWN IN MATT PORCELAIN

SECOND NATURE THE HANDLELESS COLLECTION



BESPOKE
SIZES



8 COLOURS AS STANDARD

- 
 WHITE
MATT & GLOSS
- 
 PORCELAIN
MATT & GLOSS
- 
 CASHMERE
MATT & GLOSS
- 
 DOVE GREY
MATT & GLOSS
- 
 SILVER GREY
MATT & GLOSS
- 
 DUST GREY
MATT & GLOSS
- 
 GRAPHITE
MATT & GLOSS
- 
 HARTFORTH
 BLUE
MATT
- +
- 
**FURTHER PAINTED
 COLOURS AVAILABLE**
SEE PAGE 139/140

Worksurface: Strata Quartz Ash Grey with Strata Quartz White Venato splashback

REMO

SHOWN IN MATT HARTFORTH BLUE WITH UNITY HAYWARD CONCRETE

Right: The deep, rich tones of Hartforth Blue, work perfectly alongside a contrasting concrete effect, bringing the simplicity of Remo to life, whilst giving the ultimate modern look.

Below: Industrial inspired open shelving offers a versatile storage space to house your kitchen essentials, or simply show off those ornate decorate pieces, whilst adding a sleek and contemporary edge to your design.

Worksurface: Strata Quartz Barbican









REMO

SHOWN IN MATT WHITE

Left: Experiment with bold metallic accents. Here, the simple beauty and clean lines of Remo Matt White contrast perfectly with luxury brushed brass accent features. Elaborate tiling and statement lighting complete the look.

Below: Little details can make all the difference. Remo benefits from additional bespoke options to open up a whole host of possibilities. Choose to carry Remo's integrated j-pull handle through drawers and doors for a streamlined and sleek look or include a 'stop' handle feature that is as distinctive as it is functional.

Worksurfaces: Strata Quartz Kemble Concrete



REMO

SHOWN IN MATT REGENTS GREEN & MATT CARBON WITH UNITY SEPIA GLADSTONE OAK

Right: The warming undertones of Regents Green combine beautifully with the bold dusky finishes of Carbon and Sepia Gladstone Oak, to create an industrial inspired statement, perfect for any setting.

Below: The sleek, slimline j-pull integrated handle is effortlessly accentuated by the smooth, earthy colourway of Regents Green.

Worksurfaces: Dekton Laurent









LICHFIELD

—
SHOWN IN ESPRESSO & STONE



LICHFIELD

Capturing contemporary sophistication through a sleek j-pull handleless design, Lichfield cleverly combines an intricate Shaker style frame within the unique aesthetic of a modern slab.

SHOWN IN ESPRESSO



SOLID WOOD/
REAL WOOD
VENEER



1 COLOUR AS STANDARD



ESPRESSO
MATT

+



FURTHER PAINTED
COLOURS AVAILABLE
SEE PAGE 139/140

Worksurface: Neolith Ultra Compact Strata Argentum



STANHOPE MODERN

Three eye-catching styles perfectly create Stanhope's handleless collection; from a simple Whitfield slab, to the curved saponnetta style of Henshaw and finally the integrated handle design of Acomb.

Combining clean lines with a contemporary colour palette, this range is perfect for those looking to create a minimalist, handleless environment at an affordable price.

ACOMB SHOWN IN MATT PORCELAIN & FEATURE CONCRETE



MADE TO
MEASURE

Worksurface: Strata Quartz Marble Black

SECOND NATURE THE HANDLELESS COLLECTION



TO VIEW THE FULL STANHOPE MODERN COLLECTION PLEASE SEE PAGE 137

GLOSS



WHITE
GLOSS



CREAM
GLOSS



DOVE GREY
GLOSS



CASHMERE
GLOSS



HAZE
GLOSS

WOODGRAIN FINISH



SUPER WHITE



CREAM



GREY



MUSSEL



CASHMERE

MATT



PORCELAIN
MATT



DOVE GREY
MATT



CASHMERE
MATT



DUST GREY
MATT



BLUE CANVAS
MATT



INDIGO BLUE
MATT



THORPE
GREEN
MATT



GRAPHITE
MATT



MATT BLACK
MATT

FEATURE



CONCRETE



ELLERTON

—
SHOWN IN CHALK

Worksurface: Strata Quartz Statuario
Handleless Trim: Chalk



ELLERTON



A classic look with a modern twist, Ellerton combines the fine frame detailing of a traditional Shaker with the contemporary, clean lines of a handleless door, to create a truly unique look.

Open these doors via a simple handleless trim, available in complementing painted colours or a contrasting Rye finish to create a unique look that will feel at home in any setting.

SHOWN IN STONE



1 COLOUR AS STANDARD



+



CHALK
MATT

FURTHER PAINTED
COLOURS AVAILABLE
SEE PAGE 139/140

HANDLELESS TRIM OPTIONS



CHALK



RYE

+



FURTHER PAINTED
COLOURS AVAILABLE
SEE PAGE 139/140



SECOND NATURE THE HANDLESS COLLECTION

Worksurface: Strata Quartz Pietra Charcoal & Strata Quartz Pietra Silver

Handleless Trim: Graphite



HUNTON

—
SHOWN IN CHARCOAL & DOVE GREY



HUNTON

A unique take on the popular handleless design whilst still featuring elements from its Shaker heritage, Hunton is available in four popular colours, as well as a beautiful paint to order palette. With a sleek and practical feel, the refined detail of this range allows for a modern kitchen with an enduring and sophisticated appeal.

SHOWN IN COPSE GREEN & CASHMERE



BESPOKE
SIZES



4 COLOURS AS STANDARD





 + 

PORCELAIN MATT DOVE GREY MATT DUST GREY MATT HARTFORTH BLUE MATT

FURTHER PAINTED COLOURS AVAILABLE
SEE PAGE 139/140

HANDLELESS TRIM OPTIONS







ALUMINIUM MATT WHITE MATT GRAPHITE COPPER BRASS

Worksurfaces: Strata Quartz Perlatino

Handleless Trim: Brass



SECOND NATURE THE HANDLESS COLLECTION

PORTER

SHOWN IN GLOSS DOVE GREY & MATT REGIMENT





PORTER

Porter, our best-selling contemporary slab offers a simple, linear design for an ultra-modern, minimalist look. Paired here with a brass trim that not only acts as your hidden handle, but as a feature in itself - designed to edge and accent your whole look. Effortlessly stylish and practical, this painted handleless range creates a modern space that fits perfectly around you and your lifestyle.

SHOWN IN GLOSS DOVE GREY & MATT REGIMENT

SECOND NATURE THE HANDLELESS COLLECTION



BESPOKE
SIZES



8 COLOURS AS STANDARD

- | | | | | | | | | | |
|---|---|---|---|---|---|---|---|---|---|
|  |  |  |  |  |  |  |  | + |  |
| WHITE
MATT & GLOSS | PORCELAIN
MATT & GLOSS | CASHMERE
MATT & GLOSS | DOVE GREY
MATT & GLOSS | SILVER GREY
MATT & GLOSS | DUST GREY
MATT & GLOSS | GRAPHITE
MATT & GLOSS | HARTFORTH
BLUE
MATT | | FURTHER PAINTED
COLOURS AVAILABLE
SEE PAGE 139/140 |

HANDLELESS TRIM OPTIONS

- | | | | | |
|---|---|---|---|---|
|  |  |  |  |  |
| ALUMINIUM | MATT WHITE | MATT GRAPHITE | COPPER | BRASS |

Worksurfaces: Strata Quartz Carrera Gioia

Handles: Hessay Brass D Handle (H1133.320.BHB) **Handleless Trim:** Brass

PORTER

SHOWN IN MATT HARTFORTH BLUE
& GLOSS PORCELAIN

Right: Pairing perfectly with our wide selection of trend-leading colours, a metallic handleless trim will ensure you can achieve a truly unique space whilst remaining simple and understated.

Below: A timber breakfast bar can add a striking yet functional difference to your dream design, whilst providing a warming edge to this contemporary look.

Worksurfaces: Strata Quartz Elegant Cream
& Strata Oak Herringbone

Handleless Trim: Copper







SECOND NATURE THE HANDLESS COLLECTION



PORTER

SHOWN IN MATT HARTFORTH BLUE
& GLOSS PORCELAIN

Left: Used to create a beautifully bold one-colour design, or alongside neutral shades for a pared back look, Hartforth Blue can transform any kitchen into a modern abode.

Below: Don't just let your love for metallics stop at accent trims; include a statement sink to perfectly complete this striking design.

Worksurface: Strata Quartz Elegant Cream
& Strata Oak Herringbone

Handleless Trim: Copper







PORTER

SHOWN IN CARBON WITH ALPINA DEEP OAK

Left: Carbon, our off-black hue, works perfectly as a single colourway across an entire kitchen to create a rich atmospheric space with a softer edge.

Below: The true handleless design can be carried around an island or peninsular to create a seamless, signature look.

Worksurface: Dekton Ultra Compact Domoos

Handleless Trim: Graphite

Handles: Hove Matt Black D Handle (H1130.320.MB)



PORTER

SHOWN IN GLOSS WHITE
WITH ALPINA SMOKED LARCH

Right: An aluminium handleless trim accentuates the clean linear design of Porter.

Below: A full bank of Alpina woodgrain feature doors can easily pair with Porter to introduce texture to your design, whilst creating a stylish focal point.

Worksurfaces: Strata Quartz Brilliant White, Dekton Ultra Compact Orix & Strata Timber Oak End Grain

Handleless Trim: Aluminium

Handles: Rainton Stainless Steel D Handle (H1139.320.SS)







ALPINA

The inherent natural beauty of Alpina, combined with an eye-catching handleless trim, emphasises the unique aspects of a truly bespoke kitchen.

Utilising real timber veneers and highly distinctive, heavily textured finishes, combined with made-to-measure sizes, ensures this collection is adaptable to any part of the home. Whether as a full kitchen or offset against a painted finish, Alpina has its roots firmly in both nature and cutting-edge design.

SHOWN IN DEEP OAK

SECOND NATURE THE HANDLELESS COLLECTION



MADE TO MEASURE



REAL WOOD VENEER

Worksurface: Dekton Ultra Compact Vera

Handleless Trim: Graphite



AVAILABLE IN THE FOLLOWING FINISHES



NATURAL OAK



MID OAK



SMOKED LARCH



SMOKED OAK



DEEP OAK



BURNT ASH

HANDLELESS TRIM OPTIONS



ALUMINIUM



MATT WHITE



MATT GRAPHITE



COPPER



BRASS



UNITY

Say hello to Unity, our bespoke handleless made-to-measure range that will allow you to maximise every inch of space in your kitchen.

With flexibility at the heart of this design, it has been specifically developed in an extensive choice of colours, finishes and edge options, to work around you and your environment, no matter the shape or size.

SHOWN IN SUPERMATT GRAPHITE & SUPERMATT LIGHT GREY



MADE TO MEASURE

HANDLELESS TRIM OPTIONS



ALUMINIUM



MATT WHITE



MATT GRAPHITE



COPPER



BRASS



Worksurface: Strata Quartz Premium black

Handleless Trim: Graphite

AVAILABLE IN THE FOLLOWING FINISHES



PURE WHITE
MATT & GLOSS



CASHMERE
MATT & GLOSS



LIGHT GREY
MATT & GLOSS



DUST GREY
MATT & GLOSS



GRAPHITE
MATT & GLOSS



PEBBLE GREY
MATT



INDIGO BLUE
MATT



FJORD
METALLIC
GLOSS



GOLD
METALLIC
GLOSS



CHARACTER
GRAPHITE
WOODGRAIN



RECLAIMED
OAK
WOODGRAIN



WHITE
HALIFAX OAK
WOODGRAIN



NATURAL
DAVOS OAK
WOODGRAIN



SEPIA
GLADSTONE OAK
WOODGRAIN



BLACK
WOODGRAIN



BRUNSWICK
CONCRETE



HAYWARD
CONCRETE



TRELICK
CONCRETE

EDGE OPTIONS

You even have the choice of door edge: go with a two-tone 3D glass effect, matching edges for the seamless look or multiplex edging.



MATCHING EDGE
FOR SEAMLESS
FINISH



TWO-TONE 3D
GLASS EFFECT FOR
A CONTRASTING
LOOK



MULTIPLEX EDGING
FOR A UNIQUE
STYLE

WOODGRAIN & CONCRETE EFFECT FINISH ONLY AVAILABLE IN MATCHING EDGE





SN.

THE MODERN COLLECTION

Our modern collection is designed with the demands of today's living in mind. A stunning choice of contemporary kitchen designs enable you to reflect your personality and create smart and stylish spaces that work for you and your life – with no compromise on quality, functionality or practicality.



PORTER

SHOWN IN GLOSS DUST GREY WITH ALPINA MID OAK





PORTER

Available in eight striking shades, and further painted colours, our best-selling modern range can be paired with a wide selection of ultra-stylish handles to inject your own personality and style.

Offering the perfect canvas to unleash minimalist styling, Porter is sophisticated yet functional; working well on its own or combined with a contrasting feature door, to create a timeless, contemporary space, that is perfect for any home.

SHOWN IN GLOSS WHITE

SECOND NATURE THE MODERN COLLECTION



BESPOKE
SIZES



8 COLOURS AS STANDARD



+



**FURTHER PAINTED
COLOURS AVAILABLE**
SEE PAGE 139/140

Worksurfaces: Strata Quartz Morning Frost & Corian Solid Surface Domino Terrazzo splashback

Handles: Soho Matt White Trim Handles (H1131.90.MW)



BON
appetit

PORTER

SHOWN IN MATT DRY ROSE

Left: Porter's simplicity is the perfect canvas for a wide variety of colours.

Below: Open shelving provides the ideal place to store everyday cooking essentials, whilst adding a touch of refined industrial styling.

Worksurface: Strata Quartz Strata Marquina

Handle: Matt Black Knurled (K1111.20B384MB, H1126.257B386MB)





ALPINA

Combine Alpina with a sleek handle to add a sophisticated style to any modern kitchen. Heavily inspired by nature, Alpina is available in six textured finishes.

Whether you choose to mix it with other painted colours to create a stunning, unique look, or as a full standalone kitchen to make a lasting impression, this made-to-measure collection can be designed around your individual style.

SHOWN IN SMOKED LARCH

SECOND NATURE THE MODERN COLLECTION



MADE TO
MEASURE



REAL WOOD
VENEER

Worksurfaces: Strata Quartz Brilliant
White, Dekton Orix & Oak End Grain

Handles: Rainton Stainless Steel
D Handle (H1139.320.SS)



AVAILABLE IN THE FOLLOWING FINISHES



NATURAL
OAK



MID OAK



SMOKED
LARCH



SMOKED
OAK



DEEP OAK



BURNT ASH



UNITY

SHOWN IN FJORD METALLIC GLOSS & MATT WHITE



Worksurface: Strata Quartz Absolute Marble White
Handles: Fell Stainless Steel Trim Handle (H1088.160.SS)



UNITY

Paired with a simple knob for an effortlessly clean, streamlined aesthetic, Unity is perfect for a modern-day kitchen design.

No matter how big or small your space may be, our bespoke made-to-measure collection is designed with flexibility in mind, helping to achieve a truly unique look to your precise requirements, without the need to compromise on your dream style.

SHOWN IN MATT INDIGO BLUE & BRUNSWICK CONCRETE



MADE TO MEASURE



AVAILABLE IN THE FOLLOWING FINISHES



EDGE OPTIONS

You even have the choice of door edge: go with a two-tone 3D glass effect, matching edges for the seamless look or multiplex edging.



MATCHING EDGE
FOR SEAMLESS
FINISH



TWO-TONE 3D
GLASS EFFECT FOR
A CONTRASTING
LOOK



MULTIPLEX EDGING
FOR A UNIQUE
STYLE

WOODGRAIN & CONCRETE EFFECT FINISH ONLY AVAILABLE IN MATCHING EDGE



UNITY

SHOWN IN PEBBLE GREY MATT
& TRELICK CONCRETE

Left: Make the most of small spaces through bespoke floor-to-ceiling units, tailored shelving and a free-standing peninsular table.

Below: Choose a concrete finish for a highly interesting texture which can be complemented by matching handles and worksurfaces.

Worksurface: Strata Quartz Trinity Concrete

Handles: Justice Concrete Effect Block Handle (H1151.128.CT)
& Soho Matt Black Trim Handle (H1131.250.MB)





UNITY

SHOWN IN DUST GREY MATT
WITH MUTLI PLEX EDGING

Left: A strikingly unique kitchen, pairing a muted colour palette with a contrasting edge detail, offering a clean yet modern look.

Below: A smooth, two-toned slimline structure provides a perfect contemporary base to experiment with bolder statements.

Worksurface: Dekton Ultra Compact Korus

Handles: Lloyd Matt Black Knob (K1124.25.MB)
& Lloyd Matt Black D Handle (H1156.160.MB)





FEATURED GLAZED

Perfectly suited to a contemporary setting, Glazed doors can add a striking accent piece to any kitchen design. Available in a choice of clean black or bronze styles, they work especially well within a handleless context for a seamless, ultra-modern look.

Alternatively, for those wishing to maximise natural light whilst retaining privacy, our fluted, vertical reeded glass design offers just a partial view into the cabinet.



AVAILABLE IN THE FOLLOWING FINISHES



BLACK FLUTED
GLAZED



BLACK
GLAZED



BRONZE
GLAZED

Left: Black Fluted Glazed

Right Top: Black Glazed

Right Bottom: Bronze Glazed

OUR COLLECTION



Create your perfect kitchen and your own signature look, from our extensive collection of modern and classic door styles.

Choose from over sixty different colours and finishes available as standard. Or, for a really personalised look, choose any shade from our paint-to-order palette, to create a kitchen that really reflects your individual character and taste.

4 PRICE BAND 1

BELSAY 6 COLOURS AS STANDARD + P



PORCELAIN MATT



CASHMERE MATT



DOVE GREY MATT



DUST GREY MATT



INDIGO MATT



GRAPHITE MATT

4 PRICE BAND 2

MILBOURNE 11 COLOURS AS STANDARD + P



CHALK MATT



PORCELAIN MATT



ALABASTER (CLASSIC) MATT



ALMOND MATT



SAGE MATT



STONE MATT



DOVE GREY MATT



PARTRIDGE GREY MATT



DUST GREY MATT



HARTFORTH BLUE MATT



CHARCOAL MATT

PORTER 8 COLOURS AS STANDARD + P



WHITE MATT & GLOSS



PORCELAIN MATT & GLOSS



CASHMERE MATT & GLOSS



DOVE GREY MATT & GLOSS



SILVER GREY MATT & GLOSS



DUST GREY MATT & GLOSS



GRAPHITE MATT & GLOSS



HARTFORTH BLUE MATT



4 PRICE BAND 3

FITZROY 7 COLOURS AS STANDARD + P



PORCELAIN MATT



STONE MATT



DOVE GREY MATT



PARTRIDGE GREY MATT



DUST GREY MATT



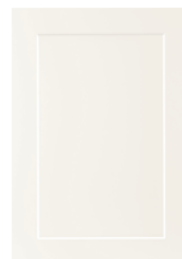
GRAPHITE MATT



HARTFORTH BLUE MATT



ELLERTON 1 COLOUR AS STANDARD + P



CHALK MATT

MADE-TO-MEASURE OPTIONS



Our collection of made-to-measure ranges offer the ultimate in design flexibility. Consisting of three distinctive ranges, Unity, Stanhope and Alpina, our made-to-measure collection includes a vast array of styles, colours and finishes, so you can create bespoke kitchens to suit your individual needs, no matter the space.

4 PRICE BAND 1

STANHOPE CLASSIC



BOLAM
ONE PIECE SHAKER

LANGLEY
SHAKER WITH OVOLO DETAIL

MELDON
CATHEDRAL ARCH

MATT



PORCELAIN
MATT



DOVE GREY
MATT



CASHMERE
MATT



DUST GREY
MATT



BLUE CANVAS
MATT



INDIGO BLUE
MATT



THORPE
GREEN
MATT



GRAPHITE
MATT



MATT BLACK
MATT

GLOSS

*ACOMB NOT AVAILABLE IN GLOSS FINISHES



WHITE
GLOSS



CREAM
GLOSS



DOVE GREY
GLOSS



CASHMERE
GLOSS



DUST GREY
GLOSS

STANHOPE MODERN



WHITFIELD
SQUARE SLAB

HENSHAW
SAPPIONETTA SLAB

ACOMB*
INTEGRATED HANDLE

WOODGRAIN FINISH



SUPER WHITE



CREAM



GREY



MUSSEL



CASHMERE

FEATURE



SUPER WHITE

UNITY



PURE WHITE
MATT & GLOSS



CASHMERE
MATT & GLOSS



LIGHT GREY
MATT & GLOSS



DUST GREY
MATT & GLOSS



GRAPHITE
MATT & GLOSS



PEBBLE GREY
MATT



INDIGO BLUE
MATT



FJORD METALLIC



GOLD METALLIC



WHITE HALIFAX OAK
WOODGRAIN



NATURAL DAVOS OAK
WOODGRAIN



RECLAIMED OAK
WOODGRAIN



SEPIA GLADSTONE OAK
GLOSS



CHARACTER GRAPHITE
WOODGRAIN



BLACK ASH
WOODGRAIN



BRUNSWICK
CONCRETE



HAYWARD
CONCRETE



TRELICK
CONCRETE

EDGE OPTIONS

You even have the choice of door edge: go with a two-tone 3D glass effect, or matching edges for the seamless look.



MATCHING EDGE
FOR SEAMLESS
FINISH
WOODGRAIN &
CONCRETE EFFECT
FINISH ONLY AVAILABLE
IN MATCHING EDGE



TWO-TONE
3D GLASS
EFFECT FOR A
CONTRASTING
LOOK



MULTIPLEX
EDGING FOR A
UNIQUE STYLE

ALPINA



NATURAL OAK



SMOKED LARCH



SMOAKED OAK



MID OAK



DEEP OAK



BURNT ASH

COLOUR COLLECTION

PAINTED-TO-ORDER



Inject personality into your kitchen with a colour palette that reflects your individual style.

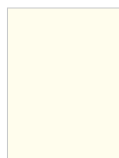
It's easy to create a look that is truly yours – painted upon your request, just for you. Whether you dream of creating a seamless, minimal canvas or unleashing a striking statement through bold rich shades, our collection of 35 beautiful hues, will fit flawlessly into your lifestyle.

Visit your local Second Nature specialist to explore our selection up close.

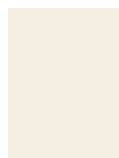
NEUTRALS



WHITE



CHALK



PORCELAIN



ALABASTER MODERN

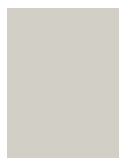


MUSSEL



STONE

GREYS



DOVE GREY



SILVER GREY



PUTTY



DUST GREY



SLATE



GRAPHITE



CARBON

NOTE: Whilst every effort has been made to accurately represent painted colours, actual product colours may vary slightly from colours shown in this brochure.

If opting for a dark kitchen, it is worth noting that darker shades can show up fingerprint marks more easily than lighter finishes, however these are easily removed with a soft Microfibre anti-scratch cloth.

WARM NEUTRALS



CASHMERE



DRY ROSE



PIMENTO



GEORGIAN RED



TRUFFLE



LAVA

OLIVE GREENS



SAGE



OLIVE



BAY GREEN



REGIMENT



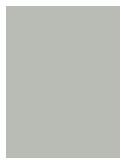
REGENTS GREEN



COPSE GREEN

FOREST GREENS

GREEN BLUES



PARTRIDGE GREY



CHINA BLUE



CHALK BLUE



STORM BLUE



HARTFORTH BLUE



CHARCOAL

INK BLUES



IVES BLUE



CADET



CORNFLOWER



INKWELL



LOOK OUT FOR THIS SYMBOL WHERE DOOR FAMILIES ARE AVAILABLE IN OUR FULL PAINT-TO-ORDER PALETTE

PICTURE YOUR DREAM KITCHEN IN YOUR HOME



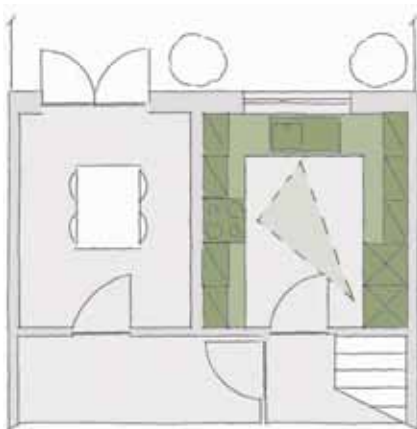
Designing the most important room in your home requires careful planning, and should be centred around the things that are most important to you and your lifestyle.

A smart and efficient layout is key to embracing and supporting this - and will help ensure that your new kitchen is not only beautiful and enjoyable, but also practical, flexible and adaptable to your needs for years to come.

Your Second Nature designer is there to guide you through the whole process during your personal design consultation - listening to your ideas, providing expert advice, reimagining your space, tailoring your design completely to you - and helping you picture your new, dream kitchen in your home.

In the meantime, here are our top considerations for choosing the best kitchen layout to maximise your space, flow and function - based on a variety typical of spaces*.

THE UPDATE



APPROX. KITCHEN DIMENSIONS
3m WIDTH 3m DEPTH

A good starting point is often considering whether an update to your kitchen without increasing the floor space will meet your needs. This is often a popular choice in smaller, or single room kitchens where the existing kitchen space works, but the style and placement of the furniture, fixtures and fittings requires an update - along with the need for extra functionality and new technology.

Ideal for separating your cooking area from other adjacent spaces, a single room kitchen in a typical semi-detached footprint lends itself well to a simple U shaped layout.

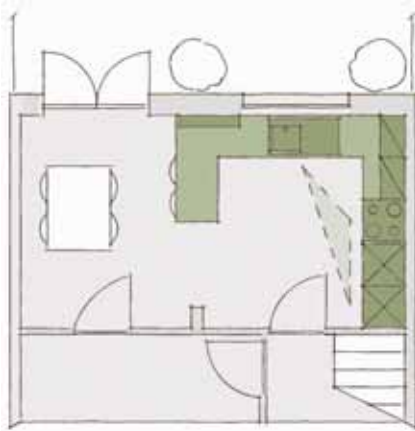
Although compact, a U shape helps to maximise your wall space, allowing the use of full height cabinetry or full runs of upper and lower cabinets on up to two of your walls.

Of course, other layouts can work equally as well in single room kitchens - such as a double galley or an L shape - but assessing the optimum layout for your individual space is all part of your Second Nature design consultation. Just ask your local, independent Second Nature expert.

**ACHIEVE THE
MOST EFFICIENT
LAYOUT BY MAPPING
YOUR 'KITCHEN
TRIANGLE'**

- THE SHORTEST ROUTE
BETWEEN YOUR HOB,
SINK AND FRIDGE.

THE KNOCK-THROUGH



APPROX. ROOM DIMENSIONS
5.5M WIDTH 3M DEPTH

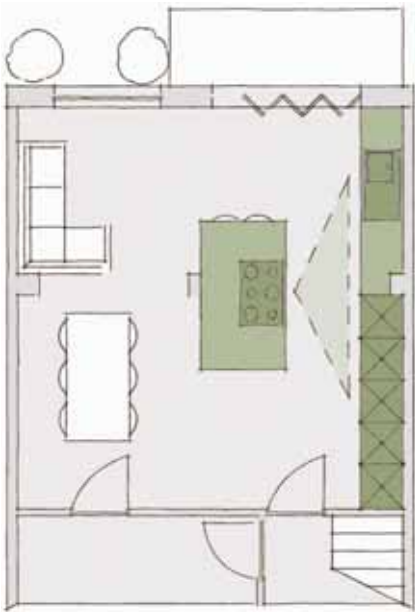
Knocking your kitchen through to an adjacent room increases your floor space and the number of layout possibilities without extending. Combining two zones into one e.g. kitchen and dining, creates a larger social space without necessarily requiring more kitchen furniture.

A U shape with a peninsular (breakfast bar), is often the go-to layout for a knock-through – enabling both bar seating and a formal dining table. Maintaining a similar level of furniture as before, it creates a subtle divide, allowing interaction with family/guests without disturbing the cooking area.

Incorporating dining room furniture, such as a dresser or breakfast station, also provides extra storage whilst keeping the kitchen free for cooking/preparation.

Alternatively, an L or G shaped layout can work just as well, and in some cases a small island can even be incorporated (typically offering extra surface area for preparation).

THE EXTENSION



Extending your home and kitchen area creates the maximum level of flexibility. Often combining up to three or four areas into one, e.g. kitchen, dining, living, playroom, office etc., an extended kitchen area can be an extremely multi-functional space.

Usually allowing for a generous island with integrated appliances/sink, the space is yours (often without too much restriction) to choose almost any layout to suit your needs.

You can often include bigger design statements too, in both size and function, such as a pantry, an American fridge-freezer or wine cooler – often with the ability to include expansive worktops, as well as full height wall-to-wall cabinetry too.

Often opening up the entire back wall of your home, an extension can truly connect you with your garden for the ultimate in indoor-outdoor living. But the ultimate beauty of having such a large space is its flexibility to adapt and grow with you as your home needs change.

APPROX. ROOM DIMENSIONS
5.5M WIDTH 6M DEPTH

IF YOU CAN DREAM IT, WE CAN DESIGN IT.

We hope that you feel inspired, and are a little closer to visualising your dream kitchen in your own home. Whatever the shape or size of your space, your local independent Second Nature expert is never far away, and is always ready to discuss bringing your kitchen dreams to reality.

To find your nearest retailer visit

www.sncollection.co.uk/showrooms

BEAUTIFUL ON THE INSIDE



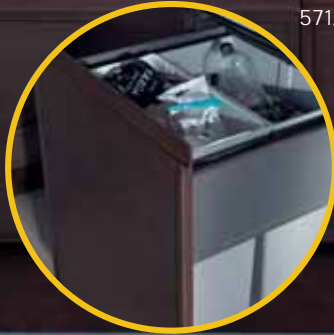
Kesseböhmer 300mm Anthracite Style Larder KSALF300FEA



Kesseböhmer Anthracite Double Shelf iMove KIMOVE600DA



Kesseböhmer 500mm Right Hand LeMans Anthracite Style KSA2LM500AR



Gollinucci Anthracite 600mm Bin 571/6050-GY

Designing a great kitchen is a complicated task with many things to take into consideration. Storage is often overlooked, but the inside of your cabinets is as important as your door and drawer fronts.

KESSEBÖHMER



Gollinucci
DESIGNED FOR EVERY DAY

blum

sensio
furniture lighting solutions

TOP TIPS

THE KITCHEN TRIANGLE

The primary tasks in your kitchen are carried out between the hob, the sink and the fridge. The triangle that connects these three areas defines what kitchen experts call an 'efficient kitchen layout'. The triangle is the shortest, most effective way to tread between these three areas and should be considered in your new kitchen design.

GROUP SIMILAR FUNCTIONS

Consider grouping the functions of your kitchen and planning your storage accordingly. There's no point in placing a spice rack metres away from the hob. Specialist trays and inserts for our range of base units and pull outs, help you to create order with a designated place for everything.

THE PERFECT SERVE

Try to imagine where you're most likely to serve up your meals. This is a great place to store your cutlery, plates and bowls. Take advantage of our wide range of drawer inserts and modular dividers, to help make meal times quicker, with everything kept conveniently to hand.

DON'T BE AFRAID OF HEIGHTS

Many British homes enjoy high ceilings and utilising this extra space should be a priority in all kitchen schemes. Consider doors that open upwards or ask your Second Nature designer about our clever iMove units which allow you to bring the contents of high cupboards down to eye level.

Sensio Primo Light



Konfigure Drawer Inserts



Kesseböhmer 600mm Anthracite Style Base Pull-Out KSABP600A

Doors:
Second Nature's Lichfield
in Espresso and Stone.

Worksurfaces:
Neolith Strata Argentum

LARDER STORAGE

KEEPING EVERYTHING CLEARLY IN SIGHT

Getting to the things at the back of your cupboards can be a real hassle. Our larders put everything clearly in sight, with an innovative system which moves the whole contents of the cupboard towards you. With quick and easy access to all your items, you'll never lose anything again, or find out-of-date ingredients lurking at the back of your cupboards. Less food will go to waste, which will save you money.



CORNER STORAGE

ORDER AND ACCESS FOR THE DARKEST SPACES

Make dark and dingy corners a thing of the past with our best-selling corner storage solutions. Utilising clever engineering, they smoothly bring the very depths of these corner cupboards all the way out to you.



WALL STORAGE & PULL OUTS

...

ACCESS ALL AREAS

Make use of your full ceiling height, and never struggle to reach your items again. Integrate a handy wall storage solution, cleverly designed to bring the whole contents of your wall cupboards within easy reach. Alternately, bespoke shelving units can provide additional, open storage space.

Make everyday tasks a breeze, with our smart range of under the counter storage solutions. Designed to maximise and organise every inch of your cupboard space, we've thought of everything - from handy removable cleaning baskets, to neat spice rack pull-outs which are perfect for keeping close to your hob.



THESE ARE JUST A SMALL SELECTION OF THE HANDY STORAGE SOLUTIONS WE HAVE AVAILABLE. VISIT YOUR LOCAL SECOND NATURE RETAILER TO EXPLORE OUR FULL RANGE.

DRAWERS



The inside of your kitchen deserves to be just as beautiful and practical as the outside. So, once you've chosen your fronts, why not continue your style right through to the insides, with one of our high quality, and simply stunning drawer box ranges? Choose a complementary colour and finish for a considered, seamless look. Add inserts and accessories to keep you organised, with hidden double drawer options, allowing to make full use of the space and height, whilst maintaining a deep drawer look.



THESE ARE JUST A SMALL SELECTION OF THE HANDY DRAWER SOLUTIONS WE HAVE AVAILABLE.
VISIT YOUR LOCAL SECOND NATURE RETAILER TO EXPLORE OUR FULL RANGE.

WASTE BINS & RECYCLING



Disposing of our waste responsibly is a key concern in many households. Whether you need a single unit for under the sink, or a bigger multi-compartment unit to help separate out your recycling items, we've got a solution to help. Available with up to four compartments, our bins seamlessly integrate into any kitchen design, making your waste management an easy part of daily life.



EXPLORE OUR FULL RANGE OF BINS, RECYCLING AND OTHER HOUSEHOLD ITEMS IN STORE.

WORKSURFACES



Selecting the right worksurfaces is essential for creating a kitchen that not only looks great but also suits your lifestyle.

Our beautiful collection of worksurfaces offers something for every home in a wide variety of materials, patterns, shapes and finishes.

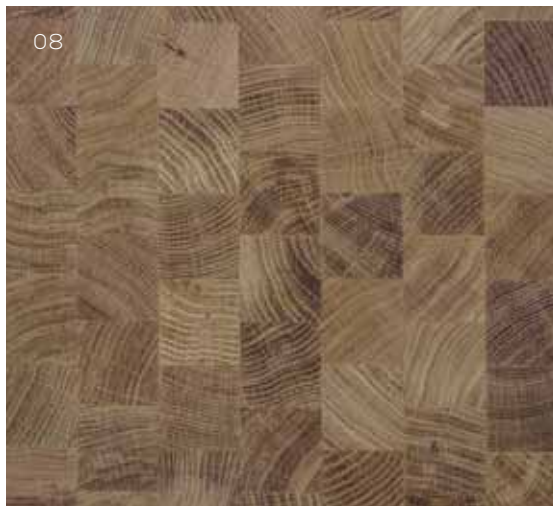
Here you'll find a small selection of worksurfaces to help inspire you, discover a wider selection of materials in store. Don't forget to ask your Second Nature designer for your copy of our worksurfaces brochure, to experience our extensive collection at your leisure.



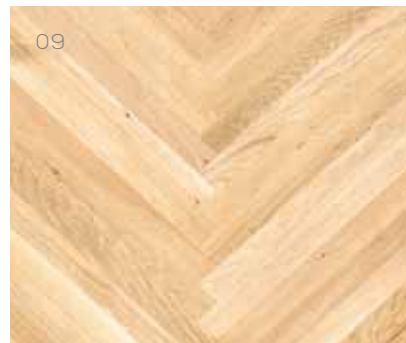
01. Brilliant White 02. Calacatta Gold 03. Arctic Storm 04. White Venato 05. Rippled Mink 06. Trillium



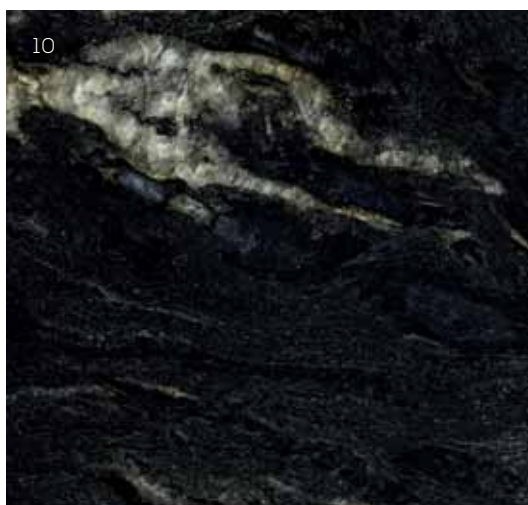
07



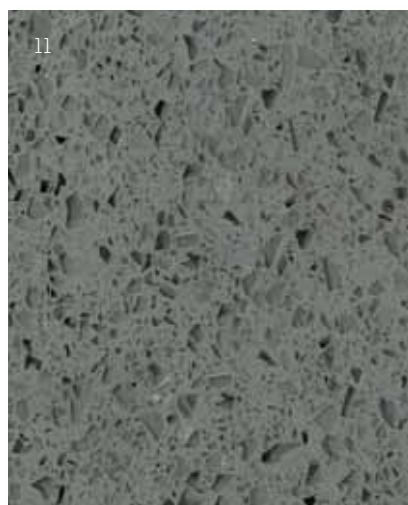
08



09



10



11



12

07. Rustic Oak 08. Oak End Grain 09. Oak Herringbone 10. Black Cosmic 11. Grey Mirror 12. Silver Waves Leather

HELPING YOU MAKE THE PERFECT CHOICE

Your worksurface is a big part of your overall kitchen look, but also needs to stand up to the rigours of daily life.

Whether you choose granite, quartz, timber, acrylic or an ultra compact material - or even mix up your materials for a really personalised look - your Second Nature specialist is there to help you choose a worksurface that not only complements your dream kitchen, but your lifestyle too.

ASK YOUR SECOND NATURE DESIGNER FOR YOUR COPY OF OUR WORKSURFACES BROCHURE.

HANDLES



Although small, handles play a big part in determining your overall kitchen look. Whether strong and structured, simple and contemporary, elegant and characterful, or full of exciting texture, our extensive handle collection offers something for every style and taste.

Here is just a small selection to inspire your kitchen design, speak to your Second Nature designer to discover even more handle options.



HELPING YOU MAKE THE PERFECT CHOICE

Choosing the right kitchen handles can really help to add your own personality and flair into your design - whether you choose one style or mix it up with several!

Of course your Second Nature designer is there to help you make a stunning choice which will perfectly complement your kitchen, and create a striking finish in your space.

ASK YOUR SECOND NATURE DESIGNER FOR MORE IDEAS AND INSPIRATION.



01. Stainless Steel Effect 02. Leather 03. Concrete 04. Chrome 05. Nickel 06. Knurled
07. Pewter 08. Black 09. Antique 10. Warm Metallics 11. Copper 12. White

HANDLELESS TRIMS



Our collection of 'true handleless' kitchens feature an ultra-modern, linear, handleless trim. This smart rail system sits neatly between the door and cabinet to create a void that enables you to reach in and easily open the cupboard.

This simple yet effective system not only functions seamlessly, but can also completely transform the overall look and feel of your kitchen when applied in any of our striking colours and finishes - creating an eye-catching design that is all about clean, uninterrupted lines.

We offer five unique handleless trim finishes for you to choose from. Whether you opt to pair your trim with matching doors to create a seamless, continuous look, or combine it with contrasting colours for a bold, individual style, our handleless trim can create a truly distinctive kitchen with a personal touch.

MATT WHITE



APPLICATION

Our handleless trims are for use with any of our 'true handleless' ranges including Hunton, our handleless Shaker, Porter, our best selling slab door, our Unity made-to-measure ranges, and our premium, highly textured, Alpina veneer doors.

MATT GRAPHITE



ALUMINIUM



METALLIC BRASS



METALLIC COPPER



ASK YOUR SECOND NATURE DESIGNER FOR MORE IDEAS AND INSPIRATION.

LIGHTING



Lighting is no longer just a kitchen accessory, it's a necessity. Creating a tailored lighting plan in the early stages of your kitchen design, will not only make your space feel lighter and brighter, but it can add that all important wow-factor. Don't worry, your Second Nature designer is there to help you to make those all important lighting choices - but here are some of the key design elements to consider.

WHAT DO I NEED & WHERE?

In selecting the most appropriate lighting for the various tasks being carried out in your kitchen, a good place to start is considering these three key lighting environments – Task, Mood and Convenience.



MOOD LIGHTING

Also referred to as feature, decorative or accent lighting, mood lighting is used to add dimension and depth to the room in order to create atmosphere and provide personality.



CONVENIENCE LIGHTING

Convenience lighting has a more specific purpose. It is directional and intended to be focused towards a specific area or to be used for a particular job in drawers or in cabinets.



TASK LIGHTING

Task lighting provides effective light to undertake everyday activities such as food preparation. Perfectly positioned, task lighting makes the kitchen an efficient working space.

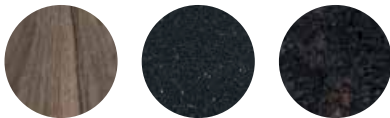
WARM WHITE VERSUS COOL WHITE

The colour that you choose for your kitchen can make a huge impact!



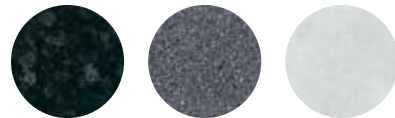
WARM WHITE

Warm white lighting pairs beautifully with deep, rich tones and woodgrains.



COOL WHITE

Cool white lighting can perfectly compliment a monochrome, light neutral, or minimal palette.



PROVIDING ILLUMINATING IDEAS

Your Second Nature designer will take you through our full lighting collection in store. Whether you already have your own ideas, or would like to be inspired, together we'll help to breathe light and excitement into your kitchen design.

ASK YOUR SECOND NATURE DESIGNER FOR MORE IDEAS AND INSPIRATION.

APPLIANCES, SINKS & TAPS

• • •

Designing a kitchen isn't just about the look, it's about creating a practical and functional space that works for you – and appliances are a key part in getting this right.

Whether you're a keen cook, a fan of gadgets, or like to keep things simple, your local Second Nature designer, will help you make the right choices to suit your lifestyle, and seamlessly integrate them into your design.



REAL KITCHENS



Seeing a real example of how a kitchen design could look in your own home, can often be the reassurance and confidence you need to make that final decision.

Explore the Real Kitchens gallery of our Second Nature website, to see a whole host of different kitchens installed in real British homes. Browse by style, finish and layout, gathering design ideas and a true indication of the whole project cost, whilst getting to know the Second Nature retailers in your local area.

To browse our real projects, visit

www.sncollection.co.uk/real-kitchens

TOP TO BOTTOM - LEFT TO RIGHT

Fitzroy Partridge Grey & Copse Green by Interiors 4 Living | Porter Graphite by Aristocraft Kitchens | Mornington Shaker Stone by Cookhouse Design York Ltd
Milbourne Charcoal by Kitchen Lifestyle | Fitzroy Partridge Grey - by Heart of Your Home Kitchens | Broadoak Graphite & Stone by Pearce Seven
Mornington Shaker Partridge Grey by Ice Interior, Lymington | Ellerton Charcoal by Wilson Drummond Ltd
Fitzroy Chalk Blue and Partridge Grey by Inline Kitchens | Broadoak Slate & Porcelain by Woollards
Porter Matt White by Input Kitchens Limited | Porter Matt Dove Grey by Finline Interiors



FIND YOUR LOCAL SPECIALIST



We hope you've enjoyed browsing our inspiration book, and that you're filled with new and exciting ideas for your dream kitchen.

With a near to endless range of design options, there's so much more for you to explore – and there's simply nothing more stunning than seeing the beauty of our kitchens up close.

So, armed with your favourite looks and kitchen must-haves, or a totally open mind, pop down to your local Second Nature retailer who'll work with you to create something entirely unique, that fits you, your budget, and your home, perfectly.

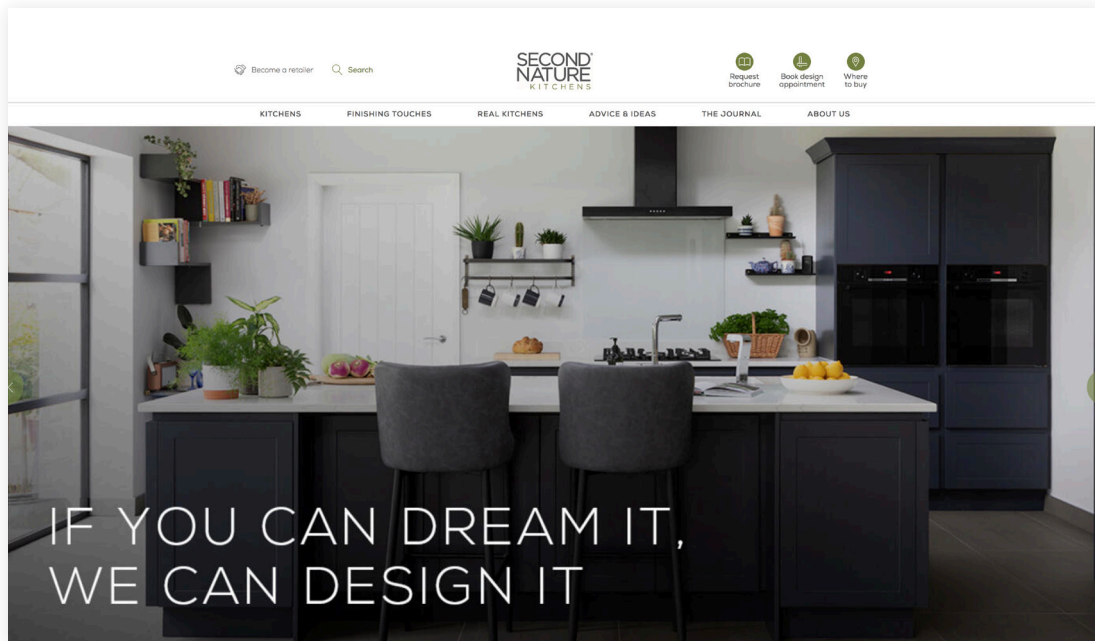
To find your local Second Nature specialist, visit

www.sncollection.co.uk/showrooms

DISCOVER THE FULL COLLECTION ONLINE



Browse all our ranges, explore our virtual showroom
and even see real kitchens in real homes.



SCAN OUR QR CODE TO QUICKLY
ACCESS OUR NEW WEBSITE

Not sure what to do? Follow the simple steps below;

Step 1. Open the camera app on your smart phone.

Step 2. Hover camera over the QR code, tap the screen to focus if needed.

Step 3. A notification will appear asking if you would like open our site.

www.sncollection.co.uk



SN.

WWW.SNCOLLECTION.CO.UK

